

# MCHB All-Awardee Virtual Meeting

Monday, August 28  
and Tuesday, August 29, 2023

## Meeting Objectives

- Provide technical assistance to Pediatric Mental Health Care Access (PMHCA) and Screening and Treatment for Maternal Depression and Related Behavioral Disorders Program (MDRBD) awardees to address project barriers and challenges and identify opportunities for growth
- Facilitate peer-to-peer information exchange and the dissemination of project results, promising practices, and lessons learned
- Facilitate discussions that identify, promote, and enhance critical priority areas for increasing behavioral healthcare access
- Foster communication and collaboration between PMHCA and MDRBD awardees and federal and non-federal partners



*This meeting is hosted by the Health Resources and Services Administration's Maternal and Child Health Bureau (MCHB), Division of Maternal and Child Health Workforce Development (DMCHWD), Division of Health Start and Perinatal Services (DHSPS).*

## Table of Contents

Agenda, Day 1 – Monday, August 28, 2023 .....	3
Agenda, Day 2 – Tuesday, August 29, 2023 .....	6
HRSA MCHB Speaker Biosketches.....	9
Guest Speaker Biosketches .....	11
PMHCA Project Officers.....	25
MDRBD Project Officers .....	26
Grants Management Specialists .....	26

## Agenda, Day 1 – Monday, August 28, 2023

---

**11:30 a.m.–1:00 p.m. ET    Networking Session: School-Based Health Alliance (SBHA) (Optional)**

In a recent learning community, participants voiced their interest in having more time to interact with other PMHCAs to share experiences collaborating with school-based health centers (SBHCs). The SBHA is hosting this networking session for any PMHCA that is considering, planning, or already collaborating with SBHCs to discuss experiences, insights, and thoughts on future directions.

*Laura Hurwitz, LCSW, PMHCA Project Lead/Consultant, School-Based Health Alliance*

---

**1:00 p.m.–1:10 p.m. ET    Housekeeping and Overview**

---

**1:10 p.m.–1:30 p.m. ET    Opening and Welcome**

*Lauren Raskin Ramos, MPH, Director, Division of Maternal and Child Health Workforce Development (DMCHWD), Maternal and Child Health Bureau (MCHB), Health Resources and Services Administration (HRSA), Department of Health and Human Services (HHS)*

*Dawn Levinson, MSW, Deputy Director, Division of Healthy Start and Perinatal Services (DHSPS), MCHB, HRSA, HHS*

---

**1:30 p.m.–2:35 p.m. ET    Plenary Session: Building Program Capacity to Improve Mental Health Access**

This session will focus on the power of using connections at the national, state, and local levels to promote and improve mental health access. Attendees will learn how to strengthen connections and build PMHCA and MDRBD program capacity through consultation to improve access for communities.

*Sandy Chung, MD, FAAP, FACHE, President, American Academy of Pediatrics, CEO, Trusted Doctors*

*Tiffany Moore Simas, MD, MPH, MEd, FACOG, Donna M. and Robert J. Manning Chair in Obstetrics and Gynecology, Chair, Department of Obstetrics & Gynecology, Professor, Obstetrics & Gynecology, Pediatrics, Psychiatry, and Population & Quantitative Health Sciences, Medical Director, Lifeline for Moms, Obstetric Engagement Liaison, MCPAP for Moms*

---

**2:35 p.m.–2:45 p.m. ET    Break**

---

2:45 p.m.–3:45 p.m. ET

**Ask the Expert Breakout Session: Building a Strong Foundation-Engaging State and Local Associations and Community Groups to Increase Behavioral Health Access Through Consultation**

In the first half of this session, facilitators will guide a discussion about effective strategies for system level engagement. In the second half, attendees will discuss engagement at the local, provider, and practice levels.

**Please note, attendees will be preassigned to a breakout session.**

---

**Ask the Expert Breakout Session 1: PMHCA**

*Julia Matakis, MPH, PCC, Senior Manager, Mental Health Programs, American Academy of Pediatrics*

*David M. Keller, MD, FAAP, Professor, University of Colorado, School of Medicine Vice Chair, Clinical Strategy & Transformation, Department of Pediatrics*

---

**Ask the Expert Breakout Session 2: PMHCA**

*Julie Gorzkowski Hamilton, MSW, LSW, Director, Mental and Relational Health, American Academy of Pediatrics*

*John Straus, MD, Founding Director of MCPAP, President of the National Network of Child Psychiatry Access Programs (NNCPAP), Massachusetts Behavioral Health Partnership, A Celeron Behavioral Health Company*

---

**Ask the Expert Breakout Session 3: MDRBD**

*Tiffany Moore Simas, MD, MPH, MEd, FACOG, Chair, Department of Obstetrics and Gynecology, Professor, UMass Chan Medical School, UMass Memorial Medical Center*

*Nancy Byatt, DO, MS, MBA, DFAPA, FACLP, Executive Director, Lifeline for Families Center & Lifeline for Moms Program, Professor with Tenure of Psychiatry, Obstetrics & Gynecology and Population & Quantitative Health Sciences, Medical Director of Research and Evaluation, MCPAP for Moms*

---

3:45 p.m.–4:00 p.m. ET

**Break**

---

**4:00 p.m.–4:45 p.m. ET**     **Lightning Round**

Lightning rounds offer awardees a fast-paced, high-energy opportunity to learn from and ask questions of peer programs. These sessions promote awareness about a specific innovation being implemented by an awardee. Attendees should bring a spirit of curiosity and their questions to this session. We encourage attendees to use the chat and other networking features in WHOVA to follow up on any of the innovations that sparked your interest.

Awardees will give a 5-minute overview of a successful innovation (a specific program component or product). After each lightning round, there will be 10 minutes for audience Q&A.

- *Lightning Round #1, PMHCA Awardee—EMSC Innovation and Improvement Center (EIIC)*  
**Anna Goldman**, RN, MSN, NPD-BC QI Improvement Nurse EMSC, EIIC  
**Jen Donathan**, MPH, Project Manager EMSC, EIIC  
**Renee Tinder**, MPH, Washington State PMHCA
- *Lightning Round #2, PMHCA Awardee—SBHA & South Carolina PMHCA Awardee—Identifying and Engaging School-Based Health Centers*  
**Laura Hurwitz**, LCSW, Project Lead and Consultant, School-Based Health Alliance  
**Victoria Scott**, PhD, MBA, Associate Professor of Psychological Science and Public Health Science. University of North Carolina at Charlotte
- *Lightning Round #3 MDRBD Awardee—FL BH IMPACT: Innovations in Equity Implementation*  
**Amandla Shabaka-Haynes**, MD, FL BH IMPACT Program Manager/Resource & Referral Specialist  
**Melissa Newsome**, MPhil, FL BH IMPACT Research Associate

---

**4:45 p.m.–5:00 p.m. ET**     **Day 1 Wrap Up**

---

## Agenda, Day 2 – Tuesday, August 29, 2023

---

11:30 a.m. –1:00 p.m. ET

**Networking Session: Emergency Medical Services for Children Innovation and Improvement Center (EIIC) (Optional)**

*Anna Goldman, RN, MSN, NPD-BC QI Improvement Nurse EMSC, EIIC*

*Jen Donathan, MPH, Project Manager EMSC, EIIC*

---

1:00 p.m.–2:00 p.m. ET

**Plenary: From Data to Action: Using IT to Maximize the Performance of PMHCA and MDRBD Programs**

*Laurel L Williams, DO, Professor, Medical Director for the Child Psychiatry Access Network, Menninger Department of Psychiatry & Behavioral Sciences, Baylor College of Medicine*

---

2:00 p.m.–2:45 p.m. ET

**Lightning Round**

Lightning rounds offer awardees a fast-paced, high-energy opportunity to learn from and ask questions of peer programs. These sessions are designed to promote awareness about a specific innovation being implemented by an awardee. Attendees should bring a spirit of curiosity and their questions to this session. We encourage attendees to use the chat and other networking features in WHOVA to follow up on any of the innovations that sparked your interest.

Each awardee will give a 5-minute showcase on how data has helped promote sustainability, increase consultations, and improve physician/practitioner champions. After each lightning round, there will be 10 minutes for audience Q&A.

- *Lightning Round #1, Awardee Missouri*  
*Melissa Maras, PhD, Program Evaluator, The Missouri Child Psychiatry Access Project (MO-CPAP)*
  - *Lightning Round #2, Awardee Rhode Island*  
*Jim Beasley, MPA, Program Manager, RI Maternal Psychiatry Resource Network Program (RI MomsPRN), Rhode Island Department of Health*  
*Sarah Hagin, PhD, Bradley Hospital, Rhode Island Hospital/Alpert Medical School of Brown University*
  - *Lightning Round #3, Awardee Vermont*  
*Kathryn Wolfe, LICSW, Program Administrator, Vermont Dept of Mental Health, VT Screening, Treatment & Access for Mothers & Perinatal Partners (STAMPP)*
- 

2:45 p.m.–3:00 p.m. ET

**Break**

---

---

3:00 p.m.–3:45 p.m. ET

**Presentation: PMHCA and MDRBD Program Evaluation: What do the Data Tell Us About Equitable Access?**

This presentation summarizes findings on behavioral health care access based on recent survey and semi-structured interview data collected from PMHCA and MDRBD awardees. We will compare attributes of PMHCA and MDRBD program implementation for equitable access by program, setting, and population characteristics. We will also describe barriers and facilitators to addressing health equity in program implementation. FL MDRBD and VA PMHCA programs will share their implementation approaches to addressing health equity in behavioral health care access.

**Amanda Gmyrek, PhD, Center Lead, Clinical Advancement Impact Center, JBS International, Inc.**

**Suzanne Kinsky, PhD, JBS International, Inc.**

**Theresa Norton, PhD, JBS International, Inc.**

**Haley Cooper, MPH, JBS International, Inc.**

**Hanna Schweitzer, MPH, VMAP State Program Administrator, Department of Behavioral Health and Developmental Services**

**Megan Deichen-Hansen, MSW, PhD, Florida State University College of Medicine**

**Heather A. Flynn, PhD, Florida State University College of Medicine**

---

3:45 p.m.–4:00 p.m. ET

**Break**

---

4:00 p.m.–4:50 p.m. ET

**Awardee Accomplishments and Vision for the Future**

PMHCA and MDRBD awardees will give remarks about what these programs have meant for their communities, outcomes that they are most proud of, and what is needed to increase impact and broaden reach.

**Awardee Presenters**

- **Mary Kimmel, MD, Assistant Professor at University of North Carolina, Medical Director of NC MATTERS (NC MDRBD)**
- **FL BH Impact Team (Video)**
- **Amie Bettencourt, PhD, Director of Research and Evaluation for Maryland BHIPP, Assistant Professor of Psychiatry and Behavioral Sciences Johns Hopkins University School of Medicine (MD PMHCA)**
- **Bethany Geldmaker, PhD, PNP, Program Consultant/Project Director PMHCA grant, Virginia Department of Health (VA PMHCA)**
- **Susan Griffin, LICSW, PIP, CHCQM, Director of PATHS, Pediatric Access to Telemental Health Services Behavioral Health Ireland Center, Children's of Alabama (AL PMHCA)**
- **Dustin Sarver, PhD, University of Mississippi Medical Center (MS PMHCA)**
- **MCPAP (Video)**

### Leadership Reflections

- **Nancy Byatt**, DO, MS, MBA, DFAPA, FACLP, Executive Director, Lifeline for Families Center & Lifeline for Moms Program, Professor with Tenure of Psychiatry, Obstetrics & Gynecology and Population & Quantitative Health Sciences, Medical Director of Research and Evaluation, MCPAP for Moms
  - **John Straus**, MD, Founding Director of MCPAP, President of the National Network of Child Psychiatry Access Programs (NNCPAP), Massachusetts Behavioral Health Partnership, A Carelon Behavioral Health Company
  - **Hae Young Park**, MPH, Deputy Director, DMCHWD, MCHB, HRSA, HHS
  - **Dawn Levinson**, MSW, Deputy Director, DHSPS, MCHB, HRSA, HHS
  - **Lauren Raskin Ramos**, MPH, Director, DMCHWD, MCHB, HRSA, HHS
- 

4:50 p.m.- 5:00 p.m. ET

### Closing Remarks

**Madhavi M. Reddy**, MSPH, Senior Public Health Analyst, Healthy Tomorrows Partnership for Children, Pediatric Mental Health Care Access

**Kimberly Sherman**, MPH, MPP, Branch Chief, Maternal Women's Health, Division of Healthy Start and Perinatal Services, MCHB

---



## HRSA MCHB Speaker Biosketches

### Dawn Levinson, MSW

---

Dawn Levinson, MSW, is the deputy director of MCHB's Division of Healthy Start and Perinatal Services and formerly MCHB's Behavioral Health Lead. Over the past two decades and across various U.S. Department of Health and Human Services agencies, Ms. Levinson's experience has spanned behavioral and public health policy planning, development and analysis, grant program management, and administrative operations and management. Ms. Levinson entered federal service through the Public Health Service Commissioned Corps, and later, through the Presidential Management Fellows program. Prior to working in government, she was a journalist, freelance writer, and direct-practice social worker in a family preservation (home visiting) program in Oregon, a substance use treatment center for female offenders in Oregon, and a tribal youth program in South Dakota. She received her MSW from Oregon's Portland State University and her BA in English from Skidmore College. She is passionate about promoting the health and well-being of moms and babies and increasing their access to respectful health and behavioral health care.



### Hae Young Park, MPH

---

Hae Young serves as the Deputy Director of the Division of Maternal and Child Health Workforce Development. In this role, she supports the division in providing national leadership and direction in educating and training our nation's current and future leaders in maternal and child health (MCH) including developing an interdisciplinary, family-centered, community-based, and culturally responsive workforce. Prior to joining the division in 2015, Hae Young supported MCHB's extramural research programs to advance the evidence base on the health and well-being of MCH populations.



## **Lauren Raskin Ramos, MPH**

---

Lauren Raskin Ramos, MPH, is the Director of the Division of Maternal and Child Health Workforce Development at the Health Resources and Services Administration's Maternal and Child Health Bureau (MCHB). In this role, Lauren leads federal efforts to train the current and future MCH workforce. Lauren is also the lead for MCHB's autism-related investments in training, research, and state systems development. Previously, Lauren held leadership roles at the Association of Maternal and Child Health Programs and the Association of State and Territorial Health Officials. Lauren is a member of the Interagency Autism Coordinating Committee. She served as an Officer of the MCH Section of the American Public Health Association (APHA) and as a Board member of the National Healthy Mothers, Healthy Babies Coalition. Lauren completed her MPH at the UCLA School of Public Health and received her BA from Tufts University. Lauren is a recipient of APHA's MCH Young Professional Award.



## **Kimberly Sherman, MPH, MPP**

---

Kimberly Sherman is the Branch Chief for Maternal & Women's Health in HRSA's Maternal and Child Health Bureau. She has been a HRSA staff member since 2008, and currently serves in the Division of Healthy Start & Perinatal Services. She earned her master's degree in public policy from American University, and Masters in Public Health from the University of Louisville. Kimberly has a strong interest in improving maternal health outcomes, and currently supports HRSA's maternal mortality reduction efforts.



## Guest Speaker Biosketches

### Jim Beasley, MPA

---

Jim Beasley, MPA, is program manager for the Rhode Island Maternal Psychiatry Resource Network Program (RI MomsPRN) at the Division of Community Health and Equity at the Rhode Island Department of Health (RIDOH). He is responsible for overall program management, including planning, implementation, reporting, and other administrative matters. Prior to this role, he worked on a perinatal and infant oral health quality improvement project within RIDOH's Oral Health Program, served as a health policy analyst at a statewide children's advocacy organization, and was a Secretary Fellow in the Office of Communication at the U.S. Department of the Interior.



### Amie Bettencourt, PhD

---

Dr. Amie Bettencourt received her PhD in clinical child psychology in 2010 from Virginia Commonwealth University and completed a postdoctoral fellowship in prevention science in the Johns Hopkins Bloomberg School of Public Health. Dr. Bettencourt is a clinical child psychologist and Assistant Professor in the Johns Hopkins School of Medicine Department of Psychiatry and Behavioral Sciences with joint faculty appointments in the Johns Hopkins Bloomberg School of Public Health and the Johns Hopkins School of Nursing. She is also the Director of Research and Evaluation for MD BHIPP, which is a multi-university partnership between the Johns Hopkins School of Medicine, the University of Maryland Baltimore School of Medicine, and the Salisbury University School of Social Work; its mission is to increase access to pediatric mental health services for Maryland's children through workforce development for pediatric primary care, emergency medicine, and behavioral health providers. Dr. Bettencourt's research focuses on the prevention and treatment of pediatric mental health problems in children and adolescents. In particular, she focuses on identifying risk and protective factors associated with the development of disruptive behavior problems and evaluating efforts to integrate evidence-based interventions designed to prevent and treat pediatric mental health problems into early education, school, and primary care settings. Clinically, Dr. Bettencourt's focus is on the prevention and treatment of disruptive behavior problems in young children, ages 2–8, with a particular focus on parenting interventions.



## **Nancy Byatt, DO, MS, MBA, DFAPA, FACLP**

---

Dr. Nancy Byatt (she/her/hers) is a perinatal psychiatrist and physician-scientist focused on improving systems of care to promote the mental health of parents and children. Her passion for her work is deeply rooted in her experiences as a clinician, researcher, daughter, and mother. She is a Professor with Tenure of Psychiatry, Ob/Gyn, and Population and Quantitative Health Sciences at UMass Chan Medical School. She developed the Massachusetts Child Psychiatry Access Program (MCPAP) for Moms. MCPAP for Moms is a statewide program that has 1) increased access to mental health care for thousands of perinatal individuals, 2) become a national model for perinatal mental health care, and 3) impacted state and national policies and funding. She is the Founding Executive Director of the Lifeline for Families Center and Lifeline for Moms Program at UMass Chan Medical School. The Center's activities include capacity building, consultation, and research. Dr. Byatt's research uses implementation science methods to design, implement, and evaluate scalable approaches for improving parental and child mental health services and outcomes. With over ten years of continuous federal funding for her research, Dr. Byatt's achievements have led to over 90 peer-reviewed publications and book chapters, over 250 presentations, and numerous national awards. Her love is her family, especially her two teenage boys. Her passion is increasing access to and the quality of mental health care. Her mission is to redefine perinatal and family health care to include mental health care.



## **Sandy Chung, MD, FAAP, FACHE**

---

Pediatrician Dr. Sandy Chung has held over 30 state and national leadership positions, including AAP Virginia Chapter President and Founder and Medical Director of the Virginia Mental Health Access Program. She is the CEO of Trusted Doctors, a pediatric practice of over 180 clinicians in Virginia, the District of Columbia, and Maryland, and serves as Medical Director of Informatics at Children's National Hospital's Pediatric Health Network. Her passionate advocacy for child health and pediatricians has delivered major advancements in healthcare equity, mental health, electronic health record burden reduction, appropriate payment, physician well-being, and optimal child health policies.



She is the recipient of multiple awards, including the March of Dimes Lifetime Heroine Award recognizing a lifetime of community volunteerism, the Clarence A. Holland Award for providing outstanding contributions to the community and demonstrating leadership in the field of political advocacy, and the Virginia Chapter Child Advocate Award for standing up for the rights, values, and recognition of Virginia's children.

As an avid educator of the next generation of pediatricians, her publications include articles on telemedicine, virtual learning, and health information technology. Dr. Chung received her medical degree from the University of Virginia and completed her pediatric residency at the Inova L.J. Murphy Children's Hospital. She has appeared in numerous media outlets, including the Washington Post, Wall

Street Journal, NPR, Washington Business Journal, Virginia Business Magazine, Contemporary Pediatrics, and AAP News. Dr. Chung is the proud mother of four amazing children who teach her something new every day.

## Haley Cooper, MPH

---

Haley Cooper is a public health professional with five years of research experience in health program development, implementation, and evaluation; research dissemination; and project management. Her work has included the design, implementation, and evaluation of multiple grant-funded programs focused on community-based harm reduction behavioral health services, stigma reduction initiatives, and barriers to and facilitators of health care access for the LGBTQ+ community and people living with HIV. She currently supports the outcome and impact evaluations of HRSA MCHB PMHCA and MDRBD Programs. She has an MPH from A.T. Still University.



## Megan Deichen-Hansen

---

Dr. Megan Deichen Hansen is Research Faculty in the Department of Behavioral Sciences and Social Medicine at Florida State University's College of Medicine. Dr. Deichen Hansen's program of research focuses on promoting perinatal health equity for medically underserved populations. One of her primary lines of research has investigated barriers and facilitators to Black women's care utilization during pregnancy and postpartum. The primary aim of this research is to develop and refine desirable, patient-centered interventions that enhance equitability of quality perinatal care and optimal health outcomes. Dr. Deichen Hansen's other research foci include investigation of integrated care models and best practices for disseminating health education materials.



## Jen Donathan, MPH

---

Jen Donathan serves as Project Manager for the EIIC's supplemental funding work with HRSA's PMHCA Program. This work supports the development of technical assistance for PMHCA partners in identifying and addressing pediatric and adolescent mental and behavioral health needs in the Emergency Department through teleconsultation and telehealth. Jen also serves as Network Operations consultant for the Pediatric Pandemic Network, whose goals focus on improving pediatric readiness and preparedness in both everyday scenarios and in disasters. She brings with her 9+ years of project and program management experience, coupled with her expertise in public

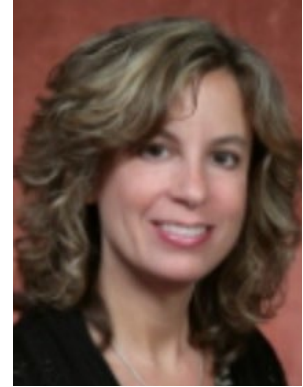


health and healthcare quality. She resides in Cleveland, Ohio, with her husband and two mischievous pups.

## Heather Flynn

---

Heather A. Flynn, Ph.D. is a clinical psychologist, Professor and Chair at the Florida State University (FSU), College of Medicine in the Department of Behavioral Sciences and Social Medicine. She is the Director of the FSU Center for Behavioral Health Integration. Dr. Flynn's research is focused on improved identification and treatment of behavioral health disorders in women, especially around the time of childbearing. Her studies are specifically aimed at developing and testing psychotherapeutic treatments for depression and co-occurring behavioral risk issues in medical and community settings. Dr. Flynn is also conducting projects focused on advancing the field both nationally and in the State of Florida through facilitating collaborative research networks to enhance synergy among experts in depression and related chronic illnesses. She is the Co-Chair of the Florida Maternal Mental Health Collaborative (<https://www.flmomsmatter.org>), and the Chair of the Women & Mood Disorders Task Group within the National Network of Depression Centers (<https://www.nndc.org>). Dr. Flynn is a member of the Motivational Interviewing Network of Trainers (MINT) and has been conducting training and supervision in MI with various settings and professionals for over 15 years. She is also a trainer and supervisor in other behavioral interventions such as Interpersonal Psychotherapy for Depression and serves on the Executive Board of the International Society for Interpersonal Psychotherapy.



## Bethany Geldmaker, PhD, PNP

---

Bethany Geldmaker, PhD, PNP, is currently in the Office of Family Health Services at the Virginia Department of Health (VDH) and has been in this position for over ten years. Her responsibilities include consultation and grant administration and oversight with responsibility for early childhood state systems building (U7EMC42173 Early Childhood Comprehensive Systems) and pediatric mental health telehealth care (U4C32320 Pediatric Mental Health Care Access Program), policy development, evaluation and finance. She is the Chair of the VDH Institutional Review Board.

Bethany received her BSN from the University of South Florida, a master's degree from the University of Virginia, and a PhD from Virginia Commonwealth University. She has received a number of awards, including Outstanding Achievement in the Research Awards Competition and the Martha Borlick Research Award for her dissertation. She was a State Early Childhood Policy Leadership Fellow with the National Governor's Association and Zero to Three.



Bethany has over 25 years of experience in MCH, state and community development, health equity and diversity, community-based public health and hospital-based practice, multi-method research, and

research ethics relating to working with communities. Over the course of her career, Bethany has worked in Virginia, Florida, the District of Columbia, and South Carolina, addressing health concerns and community development issues as well as conducting research in partnership with many diverse populations. Over the past decade, she has collaborated with state and community leaders to explore systems building and infrastructure issues for service delivery for families and children in the Commonwealth.

## **Amanda Gmyrek, PhD**

---

Amanda Gmyrek is a licensed psychologist with over 15 years of federal- and state-funded research and health program evaluation experience. Her work has primarily focused on directing, implementing, and managing cross-site evaluations of federally funded behavioral health programs for agencies including the Health Resources and Services Administration (HRSA) and the Substance Abuse and Mental Health Services Administration as well as for organizations such as the American Academy of Pediatrics. As Project Director for the HRSA MCHB PMHCA and MDRBD Programs Evaluation, she is building on previous work to direct the design and implementation of an evaluation of the existing and newly funded awardees. She also serves as Project Director for the HRSA MCHB PMHCA Impact Study, designed to examine the impact of HRSA's PMHCA program on changes in children's/adolescents' and caregivers'/families' access to behavioral health care; their subsequent receipt and utilization of behavioral health care services, including culturally and linguistically competent care; and related behavioral health impacts. The evaluation also examines the program's costs and benefits (both monetary and societal). She has a PhD from the University of Maryland, Baltimore County.



## **Anna Goldman, MSN, RN, NPD-BC**

---

Anna Goldman serves as Quality Improvement Nurse and co-project manager focusing on improvement of pediatric mental health for the Emergency Medical Services for Children Innovation and Improvement Center. Anna also facilitates the pediatric mental health clinical effectiveness team at University Hospitals Rainbow Babies and Children's Hospital. Additionally, Anna has been serving in multiple roles on the boards of directors at various nursing organizations in Ohio and brings her experience in governing organizations forward. Anna resides in Cleveland, Ohio, and during her free time, she enjoys family time with her husband and daughters.



## **Julie Gorzkowski Hamilton, MSW, LSW**

---

Julie is the Director of Mental and Relational Health at the American Academy of Pediatrics, where she oversees research, programs, and policy initiatives related to supporting the healthy mental development of children, adolescents, and families. Her work at the Academy focuses on many topics, including mental well-being, suicide prevention, relational health, systems of care, and clinic-community partnerships. Julie holds an MSW from the Jane Addams College of Social Work at the University of Illinois at Chicago and is a licensed social worker in Illinois.



## **Susan Griffin, LICSW, PIP, CHCQM**

---

Ms. Griffin is a Licensed Independent Clinical Social Worker with Children's of Alabama and holds a Certification in Health Care Quality and Management from the American Board of Quality Assurance and Utilization Review Physicians. She serves as the Director of the Pediatric Access to Telemental Health Services (PATHS) program at Children's of Alabama and is responsible for all clinical operational development and implementation. She received her BSW from the University of North Alabama and her MSW from the University of Alabama. Ms. Griffin has a background in direct clinical services, providing behavioral health care to children, adolescents, and adults. She also has extensive administrative experience, having been Director of a physician-owned partial hospitalization program/intensive outpatient program serving both adolescents and adults and served as the Chief Quality Officer for a managed behavioral health care company for 11 years prior to joining Children's of Alabama. This experience has given her many opportunities to develop collaboration between behavioral health and primary care providers to ensure delivery of efficient and high-quality services. Ms. Griffin also oversees the development of our Behavioral Health Project ECHO program, providing ongoing education for our primary care participants with PATHS.



## **Sarah Hagin, PhD**

---

Sarah Hagin, PhD, is a pediatric psychologist in the Division of Child and Adolescent Psychiatry at Rhode Island and Hasbro Children's Hospitals, specializing in pediatric gastrointestinal and feeding disorders; an Assistant Professor in the Department of Psychiatry and Human Behavior at The Warren Alpert Medical School of Brown University; and the program manager for the Pediatric Psychiatry Resource Network (PediPRN) at Bradley Hospital.





## Laura Hurwitz, LCSW

---

[Laura Hurwitz, LCSW](#), is a consultant and project lead for the School-Based Health Alliance's Pediatric Mental Health Care Access Initiative. As an independent consultant, she has also worked on projects with the National Center for Mental Health, the National Center for Safe and Supportive Schools, the Collaborative for Academic and Social and Emotional Learning as well as with local organizations in Chicago, where she resides.



Prior to becoming a Consultant, Laura was a Manager in the Chicago Public Schools' Office of Social & Emotional Learning (SEL), where she led a district-wide strategy to support high schools with school-wide SEL. She was also instrumental in developing and scaling up a multi-tiered system support behavioral health team model across Chicago Public Schools as a member of a consultant team with the Center for Childhood Resilience at Ann & Robert H. Lurie Children's Hospital.

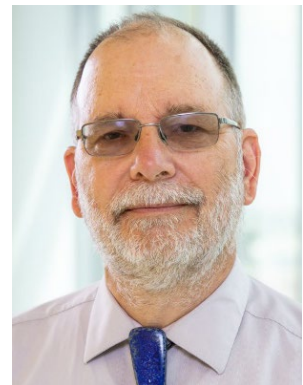
Other system-level work that Laura has been involved in has been with the Illinois Children's Mental Health Partnership, where she supported a statewide coalition of policymakers, practitioners, and advocates. She also led a CDC-funded national school mental health initiative at the School Based Health Alliance in Washington, DC, to build capacity of school districts and state education agencies in school mental health.

Laura received a BA in Psychology from Williams College and an MSW from the University of Michigan.

## David Keller, MD, FAAP

---

David M. Keller, MD, is Professor and Vice Chair for Clinical Strategy and Transformation in the Department of Pediatrics at the University of Colorado School of Medicine and Children's Hospital Colorado, where he practices primary care pediatrics in a safety-net clinic, teaches about health policy and child advocacy, and works to develop value-based systems of care for children and adolescents. He serves as a Pediatric Primary Care consultant to the Colorado Pediatric Psychiatry Consultation and Access Program.



## Mary Kimmel, MD

---

Mary Kimmel, MD, is an Assistant Professor in the tenure track at the University of North Carolina (UNC) at Chapel Hill. In her first five years at UNC, she served as Medical Director for the UNC Perinatal Psychiatric Inpatient Unit, a national referral center for treatment-resistant perinatal mood and anxiety disorders and postpartum psychosis. Dr. Kimmel also has expertise in perinatal obsessive-compulsive disorder and comorbid complex mental health and obstetric issues during the perinatal period. Dr. Kimmel is the Medical Director of NC MATTERS, a statewide consultation program led by the North Carolina Department of Health and Human Services. Dr. Kimmel will complete her PhD in Maternal and Child Health at Uppsala University in Sweden in the fall of 2023. Dr. Kimmel's research is focused on improving screening and assessment to improve personalization of treatment through the blending of patient's history, self-reported symptoms, and biomarkers. Her biomarker work strives to better understand the role of the microbiome, immune system, and stress on the current and future mental health of the parent-child dyad.



## Suzanna Kinsky, PhD, MPH

---

Suzanne Kinsky is a public health researcher with over 20 years' experience designing, implementing, and researching community- and clinically based healthcare initiatives in a variety of settings. She has designed and implemented multiple randomized controlled trials and observational research and evaluation studies, including: serving as Co-Principal Investigator on a \$3.7 million Patient-Centered Outcome Research Institute (PCORI) - funded adaptive platform comparative effectiveness study, which compared patient-centered models of care that support individuals with sepsis or pneumonia as they transition from hospital to home; leading a Robert Wood Johnson Foundation-funded study examining the effect of Supplemental Nutrition Assistance Program benefits on health outcomes; directing a qualitative study on LGBTQ+ individuals' experiences accessing health care and health insurance benefits; and co-leading a research agenda focused on the use of patient-reported outcomes to predict health care cost and utilization outcomes. She has an MPH from Johns Hopkins Bloomberg School of Public Health and a PhD from the University of Pittsburgh School of Public Health.



## **Melissa Maras, PhD**

---

Melissa Maras, PhD, is a Clinical-Community Psychologist based in Columbia, Missouri. Her scholarship focuses on building capacity among schools and other youth-serving community agencies to expand access to quality mental and behavioral health supports. Dr. Maras is a Research Consultant at the Assessment Resource Center, an outreach unit in the University of Missouri College of Education and Human Development. In this role, she supports a diverse portfolio of partners engaged in systems-level improvement work. Dr. Maras has been the Program Evaluator for the Missouri Child Psychiatry Access Project (MO-CPAP) since its inception in 2018. She is currently expanding the scope of behavioral health consultation supports for young people in Missouri as the Project Coordinator and Evaluator for MO-CPAP Schools.



## **Julia Matakis, MPH, PCC**

---

Julia Matakis, MPH, PCC, serves as the Senior Manager, Mental Health Programs at the American Academy of Pediatrics. In this role, she manages efforts to support pediatricians and cross-sectoral partners in promoting healthy mental development and relational health for children and families. She oversees multiple grant funded projects with a focus on mental health, rural health, adolescent health, and the impact of social media on children and adolescents. She has extensive experience in group facilitation and training; program design, delivery, and evaluation; and strengths-based workforce development. She has both academic and professional training in maternal and child public health; leadership development and change management; and trauma-informed leadership development and coaching.



## **Melissa Newsome, MPhil**

---

Melissa Newsome is a Research Coordinator at Florida State University's College of Medicine in the Center for Behavioral Health Integration. She is also the lab manager for Dr. Heather Flynn's Community Behavioral Health lab. Melissa holds a bachelor's degree in Biological Sciences and International Affairs from Florida State University, and in 2018, she obtained an MPhil in Social Anthropology with an emphasis in medical anthropology from the University of Cambridge. Her work focuses on understanding the intersections of culture, society, and healthcare to improve community well-being.



## Theresa C. Norton, PhD

---

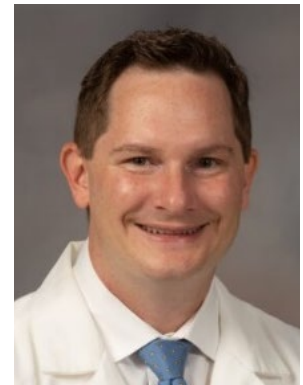
Theresa C. Norton is a public health professional with more than 20 years of accomplishments in implementation science and dissemination, research, evaluation, data analysis, knowledge translation, collaboration and learning, and project management for evidence-informed policy and practice in behavioral health and social health, public health, and global health. Her current work focuses on monitoring and evaluation of pediatric mental health and maternal health programs and initiatives funded by the U.S. Department of Health and Human Services. She served as Principal Investigator on mixed methods studies of influences on uptake of evidence-based practices in maternal and newborn health in low- and middle-income countries as part of a \$560 million-dollar global health program funded by the U.S. Agency for International Development. She has also conducted studies of behavioral and social health risk and protective factors for U.S. Army service members. She has a PhD in Health Sciences from Ghent University.



## Dustin Sarver, PhD

---

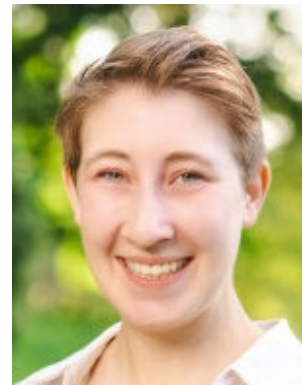
Dr. Dustin Sarver is a clinical psychologist and an Associate Professor in the Department of Psychiatry and Human Behavior at the University of Mississippi Medical Center. He is the Clinical Director and Co-Principal Investigator for Mississippi's PMHCA, Child Access to Mental Health and Psychiatry.



## Hanna Schweitzer, MPH

---

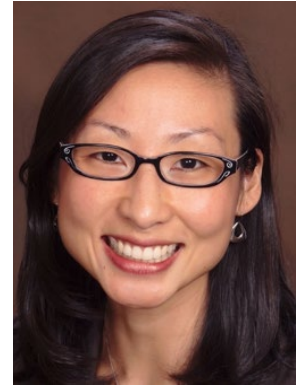
Hanna Schweitzer (they/them) is the program administrator for the Virginia Mental Health Access Program (VMAP) at the Virginia Department of Behavioral Health and Developmental Services. Prior to this role, Hanna worked at the U.S. Agency for International Development, where they integrated mental health programming into HIV care. They are passionate about patient-centered care, and work on engagement research with patient-partners to advance the science of engagement and healthcare equity. Hanna received their MPH with a concentration in health behavior from the University of Michigan.



## **Victoria C. Scott, PhD, MBA**

---

Victoria C. Scott, PhD, MBA, is an applied, interdisciplinary social scientist and community psychologist with formal training in community psychology, clinical psychology, and business administration. She holds an academic appointment at the University of North Carolina at Charlotte as an Associate Professor of Psychological Science and Public Health Science. Her research focuses on promoting health equity and fostering collective wellness through systems-level capacity building efforts. With a particular interest in school, healthcare, and human service settings, Dr. Scott develops and studies approaches to implementing, evaluating, and improving multi-faceted, complex interventions. In this vein, she serves as the Principal Evaluator of the South Carolina Youth Access to Psychiatry Program. The impact of her contributions to the community of scholars and practitioners has been recognized through the Society for Community Research and Action Early Career Award, the Don Klein Publications Award, and the American Evaluation Association Outstanding Evaluation Award.



## **Amandla Shabaka-Haynes, MD**

---

Amandla Shabaka-Haynes, MD, is a native of Tallahassee, Florida. She received her BS in Biology/Pre-medicine at Xavier University of Louisiana and completed her medical training at the Latin American School of Medicine. Dr. Haynes currently serves as Program Manager for pediatric and perinatal behavioral health programs at the Florida State University College of Medicine Center for Behavioral Health Integration. She coordinates the Florida Behavioral Health Integrated Management of Personnel Administration Through Computer Technology Program and serves as the Resource and Referral Specialist, connecting clinicians and patients to psychiatric consultation and statewide behavioral health resources. She is also a certified Acupuncture Detoxification Specialist and works to address behavioral health through traditional and alternative modalities. Dr. Haynes supports practical efforts to improve birth outcomes and reduce health inequities locally and globally, actively advocating for health justice for BIPOC (Black and Indigenous People of Color) communities.



## **Tiffany Moore Simas, MD, MPH, MEd, FACOG**

---

Dr. Moore Simas is an academic specialist in general Ob/Gyn, a physician-scientist, an educator, and an advocate. She is the founding Obstetric Engagement Liaison of the Massachusetts Child Psychiatry Access Program (MCPAP) for Moms, a first-in-nation statewide program that enhances the capacity of obstetric care clinicians to address perinatal mental health and substance use disorders. Dr. Moore Simas is medical director of Lifeline for Moms, a program founded to provide technical assistance for others developing Perinatal Psychiatry Access Programs, like MCPAP for Moms, and as a research home to further advance innovations in integrating obstetric and mental health care. She is medical director and Principal Investigator (MPI) of the Lifeline for Moms National Network of Access Programs, which facilitates peer learning and resource sharing with partners and collaborators across the U.S. as well as quality improvement and program evaluation within and across Access Programs.



Dr. Moore Simas has a long-standing federally funded research portfolio through Center for Disease Control and Prevention, National Institute of Health, PCORI, American College of Obstetricians and Gynecologists (ACOG), and Perigee and other foundations; she is an author on well-over 100 peer-reviewed publications. She partners with and advises professional, advocacy, and governmental organizations to advance the equitable care of all pregnant and postpartum individuals. She serves her profession nationally as the Society of Academic Specialists in General Obstetrics and Gynecology's President Elect, on ACOG's Maternal Mental Health Expert Work Group (Co-Chair) and Clinical Practice Guidelines OB Committee, and as an American Board of Obstetrics and Gynecology oral examiner. She has served on the Alliance in Innovation in Maternal Health's Perinatal Mental Health and Postpartum Discharge Transitions Safety Bundle Work Groups.

## **John Straus, MD**

---

Dr. Straus is the founding director of the Massachusetts Child Psychiatry Access Program (MCPAP), which was the first statewide program designed to address the shortage of child psychiatrists. MCPAP is a model for the implementation of child psychiatry access programs (CPAPs) in 45 other states, 2 territories, and 2 tribes. He is president of the National Network of Child Psychiatry Access Programs, a non-profit dedicated to providing technical assistance and support to CPAPs. Dr. Straus was responsible for the expansion of MCPAP to include MCPAP for Moms to address perinatal depression, mental illness, and substance use, MCPAP for Autism Spectrum Disorders and Intellectual Disabilities, and Adolescent Substance Use and Addiction Program-MCPAP to address teen substance use disorder (SUD). Legislation for HRSA to lead the national expansion of both programs was included in the 21st Century Cures Act, the American Rescue Plan Act, and most recently, the Safer Communities Act, resulting in CPAP programs in 46 states, 4 territories, and 2 tribes. Beginning in 2019, using the MCPAP model, Dr. Straus designed the



Massachusetts Consultation Service for Treatment of Addiction and Pain to assist adult primary care providers with SUD, addiction, and chronic pain issues.

Dr. Straus is Medical Director Special Projects at the Massachusetts Behavioral Health Partnership (MBHP), having retired from his full-time position as Vice President Medical Affairs. Prior to working at the MBHP, Dr. Straus was Medical Director of the Fallon Community Health Plan. He currently is a member of the Healthcare Effectiveness Data and Information Set Behavioral Health Measurement Advisory Panel, having been involved with HEDIS since its inception. Dr. Straus is responsible for the technique of health plan measurement known as the “hybrid method.”

He is a pediatrician having had a primary care practice for 22 years. Dr. Straus completed medical training at Columbia University and pediatric training at Strong Memorial Hospital at the University of Rochester; he was a Robert Wood Johnson Clinical Scholar at Johns Hopkins Medical School.

## Renee Tinder

---

Ms. Tinder is the Behavioral and Adolescent Health Consultant for the Children and Youth with Special Health Care Needs section at the Washington State Department of Health. She has over 15 years’ experience working in the field of substance abuse prevention and mental health promotion. Her substance use prevention work, which included grant and program management and collaboration with and engagement of stakeholders, focused on improving health outcomes for youth, reducing risk factors, and delaying onset of substance use. She has extensive experience working with community coalitions, conducting community needs assessments, reviewing data, implementing evidence-based programs, and evaluating programs. Ms. Tinder has thorough knowledge of the Strategic Prevention Framework, strategic action planning, survey collection, and program implementation. She also has experience in youth suicide prevention and a passion for working with youth and families. Ms. Tinder holds an MPH, a BA in Anthropology, and a BS in Community Health Education.



## Laurel L. Williams, DO

---

Laurel L. Williams, DO, is a Professor in the Menninger Department of Psychiatry and Behavioral Science at Baylor College of Medicine and the Medical Director for the Centralized Operational Support Hub for the Texas Child Mental Health Care Consortium, which coordinates the implementation of a state-wide child psychiatry access network and tele-mental health to youth in schools. Dr. Williams is also the Training Director for Child and Adolescent Psychiatry at Baylor. Dr. Williams completed both her fellowship and residency training at Baylor College of Medicine in 2004 upon graduation from University of North Texas School of Osteopathic Medicine in 1999. In 2020, Dr. Williams was awarded a Women of Excellence Award and a Norton Rose Faculty Excellence Award in Educational Leadership at Baylor College of



Medicine. Dr. Williams has special expertise is working with youth who have suicidal and self-injurious behaviors and pregnant and post-partum adolescents.

## **Kathryn Wolfe, LICSW**

---

Kathryn Wolfe, LICSW is the program administrator for Vermont Screening, Treatment and Access for Mothers and Perinatal Partners (STAMPP) with the Dept of Mental Health. She works in partnership with the VT Dept of Health to support the enhancement of perinatal mental health supports and services across the state of Vermont. She has a background in clinical work on psychiatric units, correctional facilities, community mental health, as an embedded clinician at a primary care practice and with a FQHC behavioral health clinic. She received her Master of Social Work at the University of Vermont and her Bachelor of Arts in Psychology and Bachelor of Science in Rehabilitation Services at Pennsylvania State University.





## PMHCA Project Officers



**Kaitlyn Craig**

Ph: (240) 475-2603  
[KCraig@hrsa.gov](mailto:KCraig@hrsa.gov)



**Cara de la Cruz**

Ph: (301) 443-0764  
[CdeLaCruz@hrsa.gov](mailto:CdeLaCruz@hrsa.gov)



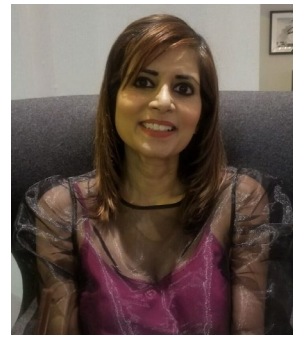
**Jordanna Snyder**

Ph: (301) 945-9482  
[JSnyder1@hrsa.gov](mailto:JSnyder1@hrsa.gov)



**Patrice Moss**

Ph: (240) 381-4081  
[PMoss@hrsa.gov](mailto:PMoss@hrsa.gov)



**Madhavi Reddy**

Ph: (301) 443-0754  
[MReddy@hrsa.gov](mailto:MReddy@hrsa.gov)



**Kelly Hughes**

Ph: (301) 945-3331  
[KHughes@hrsa.gov](mailto:KHughes@hrsa.gov)



**Katherine Gainer**

Ph: (301) 443-7602  
[KGainer@hrsa.gov](mailto:KGainer@hrsa.gov)

## MDRBD Project Officers

### **Martha “Sonsy” Fermin**

Ph: (301) 443-1504  
[MFermin@hrsa.gov](mailto:MFermin@hrsa.gov)

### **Sandra Sayegh**

Ph: (301) 443-0625  
[SSayegh@hrsa.gov](mailto:SSayegh@hrsa.gov)

## Grants Management Specialists



### **Leon Harrison**

Ph: (301) 443-9368  
[LHarrison@hrsa.gov](mailto:LHarrison@hrsa.gov)



### **Marc Horner**

Ph: (301) 443-4888  
[MHorner@hrsa.gov](mailto:MHorner@hrsa.gov)



### **Crystal Howard**

Ph: (301) 443-3844  
[CHoward@hrsa.gov](mailto:CHoward@hrsa.gov)