



2023 MCHB Programs All Awardee Annual Meeting Lightning Round

Melissa Maras, PhD (Missouri)

Jim Beasley, MPA (Rhode Island)

Sarah Hagin, PhD (Rhode Island)

Kathryn Wolfe, LICSW (Vermont)

Vision: Healthy Communities, Healthy People





2023 MCHB Programs All Awardee Annual Meeting Lightning Round

Missouri

Melissa Maras, PhD

Vision: Healthy Communities, Healthy People





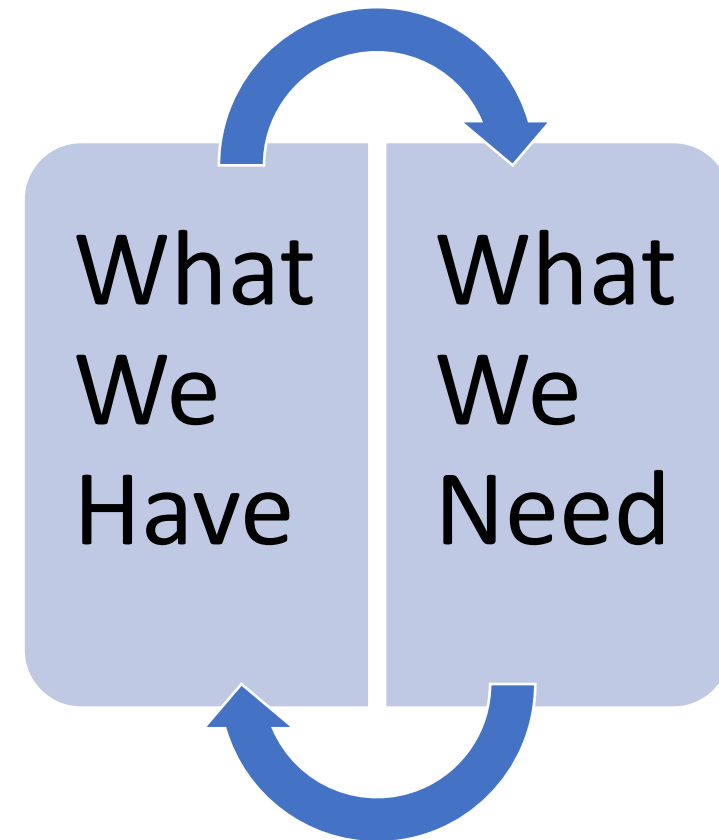
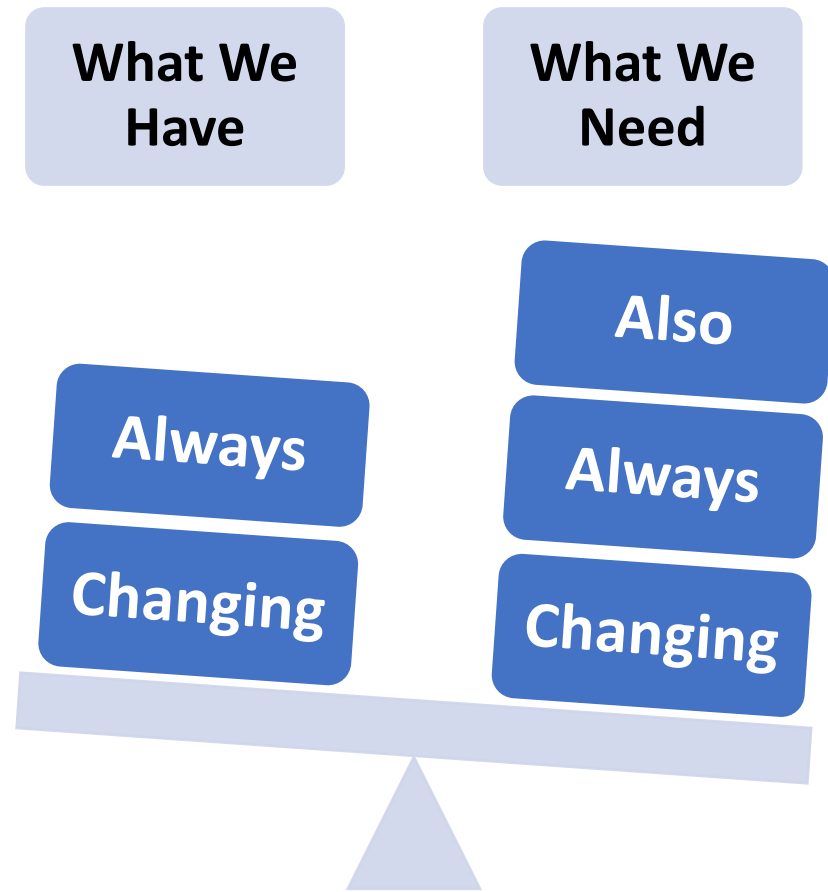
MO-CPAP

MISSOURI CHILD PSYCHIATRY
— ACCESS PROJECT —

MCHB Tele-Behavioral Health Program Annual Meeting
8.29.2023

[Learn more about MO-CPAP](#)

Putting movement in improvement



Building Blocks of Behavioral Health Care

- Prescribing & Non-prescribing providers
- MO-CPAP → Interdisciplinary team members
- Co-facilitated
- Lots(!!!!!) of evaluation





Thank you!!

Melissa Maras, Ph.D.

marasme@missouri.edu

[Learn more about MO-CPAP](#)



2023 MCHB Programs All Awardee Annual Meeting Lightning Round

Rhode Island
Jim Beasley, MPA
Sarah Hagin, PhD

Vision: Healthy Communities, Healthy People



Psychiatry Resource Networks (PRN) Reporting for Sustainability



Both the RI MomsPRN and PediPRN programs, which are funded by HRSA grants awarded to the Rhode Island Department of Health, continue to conduct both joint and aligned evaluation and communications to support sustainability efforts.

Rhode Island's PSYCHIATRY RESOURCE NETWORKS for Providers

Are you a Rhode Island healthcare provider treating pregnant, postpartum, or pediatric patients?
Do you ever need to consult with a psychiatrist about your patients' mental health and/or substance use?
Rhode Island offers statewide real-time clinical teleconsultation and referral services for you.

What can I use the Psychiatry Resource Networks for?
When you call one of the PRNs, you can speak with specialized behavioral health experts from Women & Infants Hospital and Bradley Hospital for guidance on:

- Diagnosis
- Treatment Planning
- Medication Safety
- Resource and Referral Support
- Provider Training

RI MomsPRN
Maternal Psychiatry Resource Network
Serving providers treating pregnant and postpartum patients in partnership with Women & Infants Hospital
Call: 401-432-2000
Monday-Friday 8:00 am – 4:00 pm
To learn more please email to request a teleconsultation call back: RIMomsPRN@RIH.org
Learn More: womenandinfants.org/RI-MomsPRN

PediPRN
Pediatric Psychiatry Resource Network
Serving providers treating children and adolescents in partnership with Bradley Hospital
Call: 401-432-1543
Monday-Friday 8:00 am – 5:00 pm
To learn more: pedi.org

Women & Infants | Bradley Hospital

Promotional Materials

Psychiatry Resource Network Programs Overview

➤ In 2018, the Rhode Island Department of Health was able to secure two federal grant awards to sustain/launch two statewide Psychiatry Resource Network (PRN) Programs.

➤ Both PRN programs seek to build the capacity of providers to **universally screen for behavioral health** with their perinatal and/or pediatric patients, and **respond with appropriate treatment/referral**.

➤ Both PRN Program offer **providers**:

- 1) real-time psychiatric telephone consultation and resource/referral services;
- 2) opportunities to attend professional education sessions;
- 3) in-depth and long-term collaborations regarding provider training and/or practice quality improvement

RI MomsPRN | PediPRN | WOMEN & INFANTS | Bradley Hospital

Programmatic Presentations

Rhode Island Psychiatry Resource Network (PRN) TELECONSULTATION PROGRAMS FOR PROVIDERS

➤ **RI MomsPRN** | **PediPRN**

The need for pregnant, postpartum, and pediatric access to mental health support is growing. Rhode Island's RI MomsPRN and PediPRN programs enhance provider, build competency, and increase patient access to care.

RHODE ISLAND'S TWO PRN PROGRAMS SUPPORT PROVIDERS
Rhode Island has two statewide Psychiatry Resource Network (PRN) teleconsultation programs:

- **RI MomsPRN** and **PediPRN**. These programs support Rhode Island healthcare providers by offering real-time teleconsultation, professional education, and resource/referral services related to mental health. This service enables providers to respond to care for their patients more promptly with the goal of avoiding lengthy wait times for specialized care.
- **RI MomsPRN** serves providers treating pregnant and postpartum patients. Services are implemented by the Rhode Island Department of Health at Women & Infants Hospital, launched in December 2018.
- **PediPRN** serves primary care providers (PCPs), family medicine and adolescent medicine, and is implemented by Bradley Hospital, launched in December 2018.

2,300 unique perinatal and pediatric patients as of January 31, 2022.
55.7% of patients are from the RI MomsPRN program.
30.4% of patients are from the PediPRN program.

3,042 RI MomsPRN | 679 PediPRN | 252 unique patients

RI MomsPRN | PediPRN | WOMEN & INFANTS | Bradley Hospital

Program Brief

Without RI MomsPRN

- 50% of patients are unable to get care
- Patients are left with behavioral health needs
- Many patients report the feeling of isolation
- Current wait times are 6-8 weeks
- No ability to connect health care providers
- No ability to connect health care providers

With RI MomsPRN

- 50% of patients are able to get care
- Patients are able to get care
- Many patients report the feeling of connection
- Current wait times are 1-2 weeks
- Ability to connect health care providers
- Ability to connect health care providers

2,300 unique patients as of January 31, 2022

55.7% of patients are from the RI MomsPRN program

30.4% of patients are from the PediPRN program

3,042 RI MomsPRN | 679 PediPRN | 252 unique patients

Infographics / Case Examples

HealthFacts RI

HealthFacts RI is a data analysis tool that provides insights into various health metrics. It includes charts and graphs to visualize data trends and patterns.

Data Analysis



Bradley Hospital
Lifespan. Delivering health with care.®

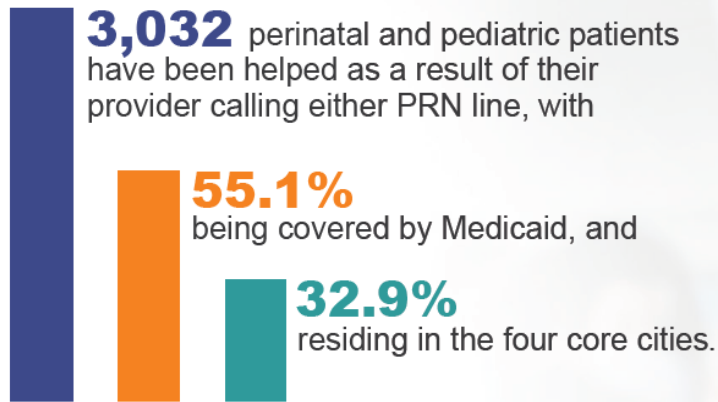
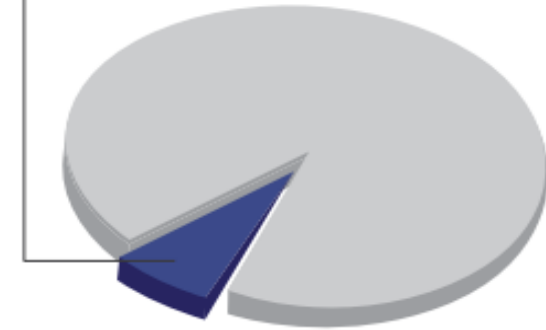
Psychiatry Resource Networks (PRN) Joint Program Measures and Infographics



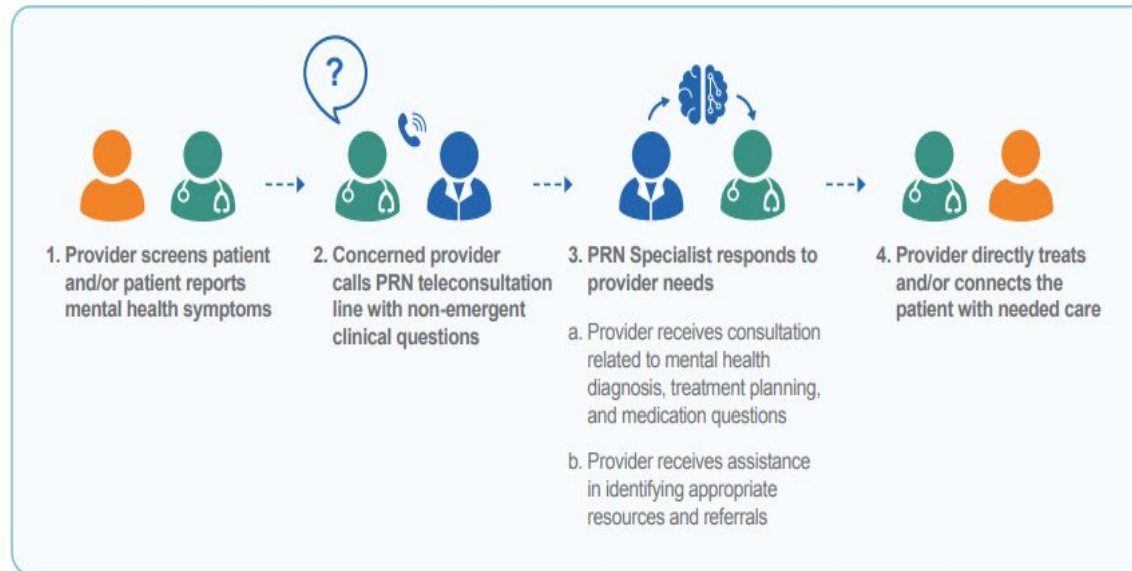
Together, the RI MomsPRN and PediPRN lines have supported more than



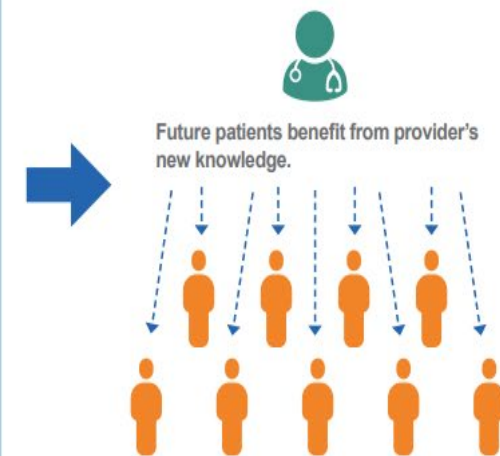
It is estimated that only 11% of psychiatrists in Rhode Island provide specialized psychiatric care for perinatal and pediatric patients.



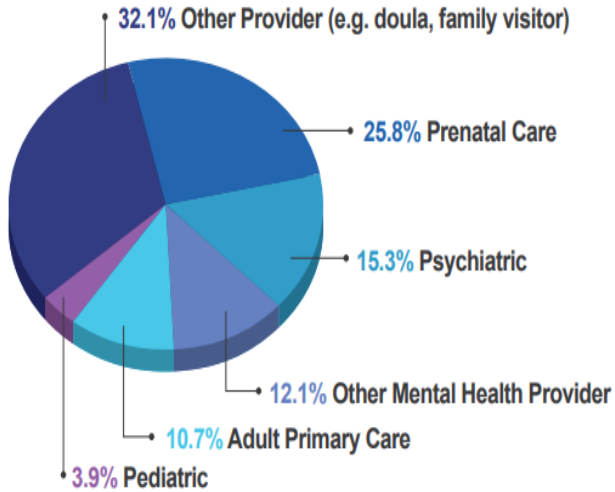
Source: Rhode Island's Psychiatry Resource Network Programs, Rhode Island Department of Health, 2023



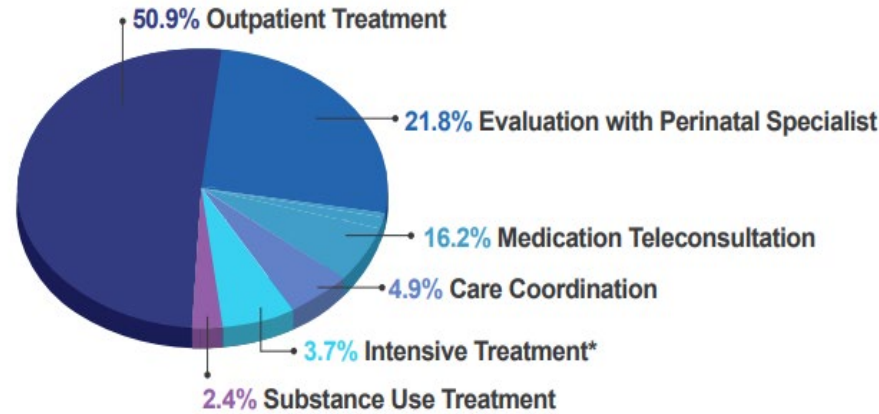
Long-term Impact



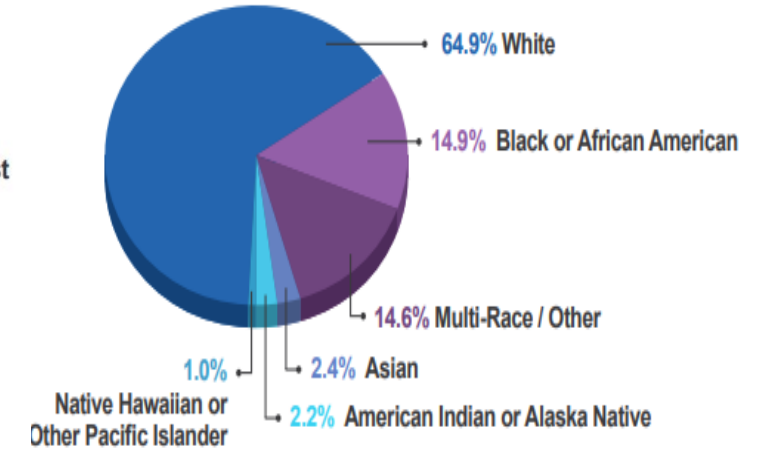
Utilizers of RI MomsPRN by Provider Type



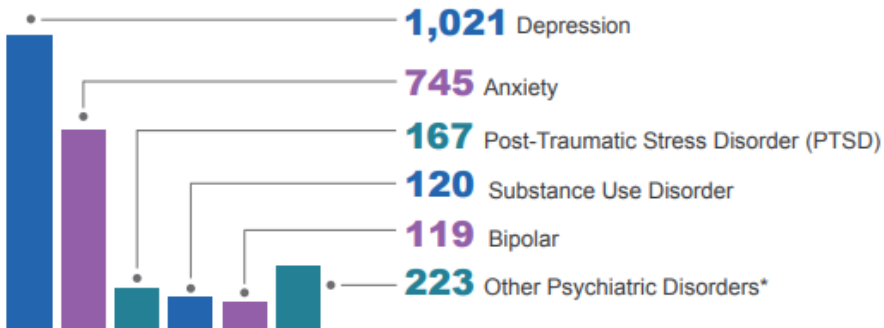
Referrals/Services Requested by RI MomsPRN Callers



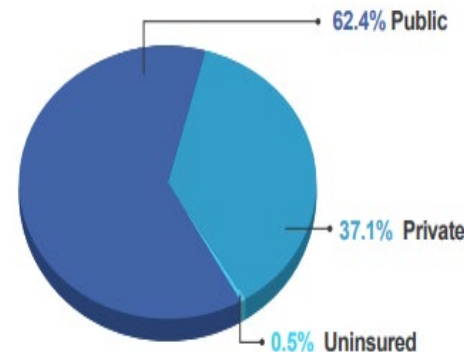
RI MomsPRN Patients Served by Race*



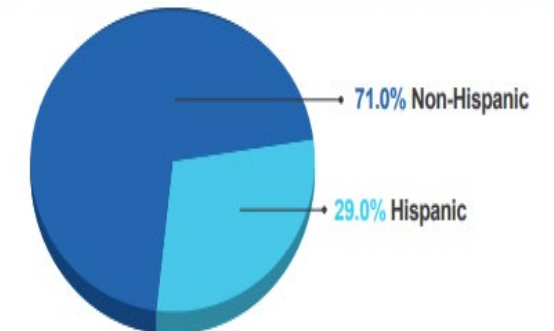
Clinical Concerns for RI MomsPRN Teleconsultations



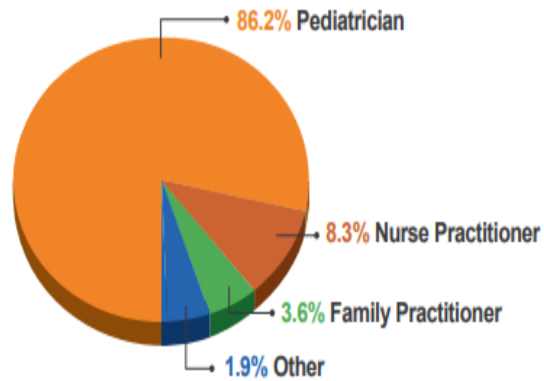
RI MomsPRN Patients Served by Health Plan*



RI MomsPRN Patients Served by Ethnicity*

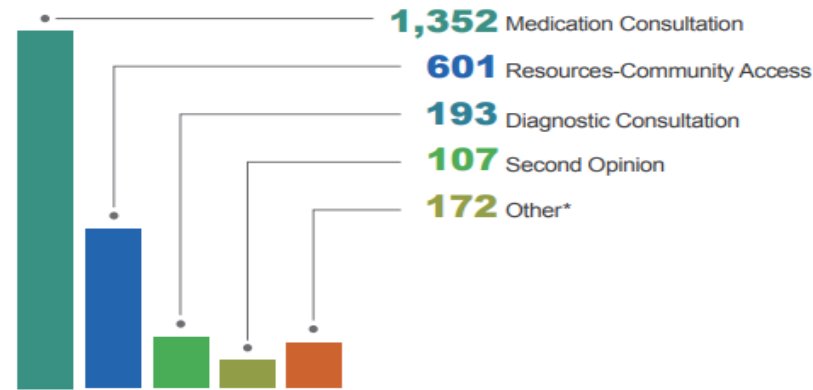


Utilizers of PediPRN by Provider Type

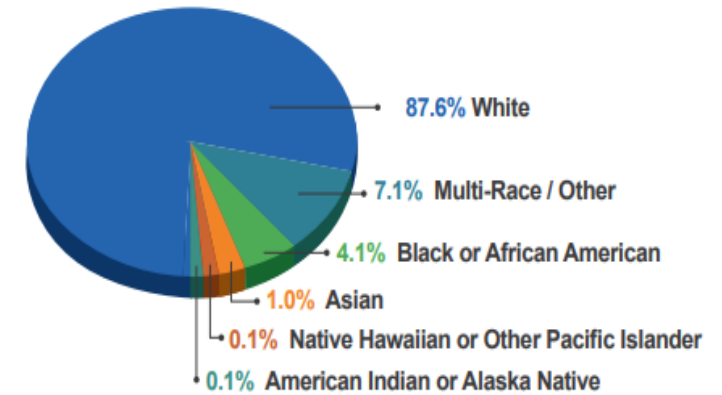


Reasons Providers Call PediPRN

The most common reasons for provider calls to PediPRN are:

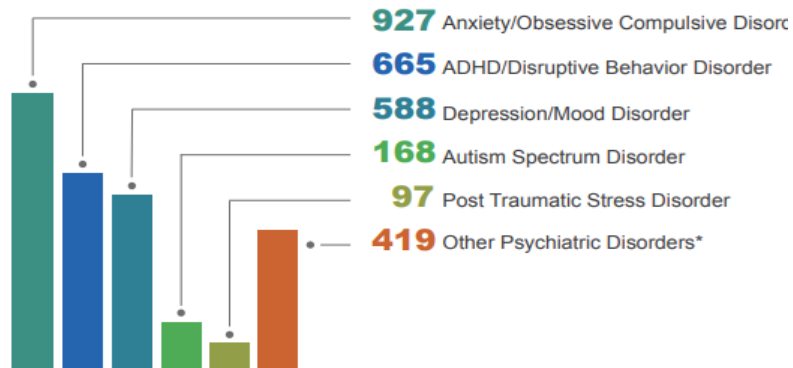


PediPRN Patients Served By Race*

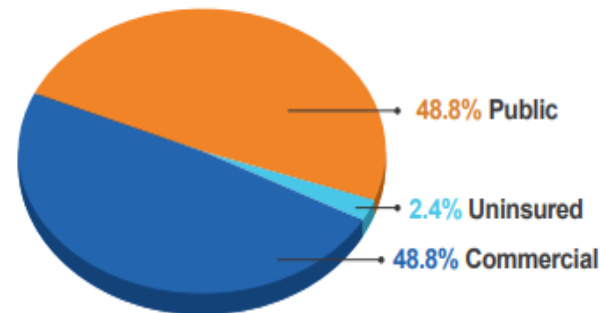


Common Provisional Diagnosis for PediPRN Psychiatric Consultations

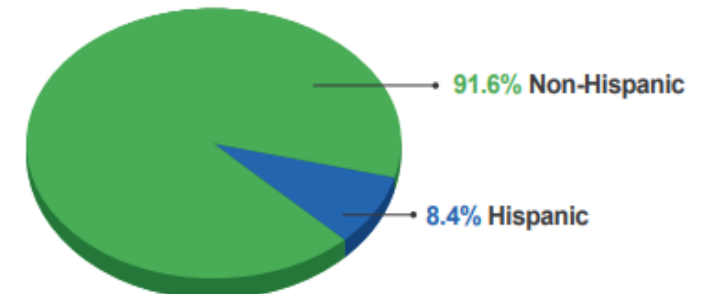
Psychiatric consultations for children are mostly related to:



PediPRN Patients Served By Health Plan*



PediPRN Patients Served By Ethnicity*



Contact Information



Serving providers treating pregnant and postpartum patients in partnership with Women & Infants Hospital
Learn more: www.womenandinfants.org/ri-momsprn



Serving providers treating children and adolescents in partnership with Bradley Hospital
Learn more: www.pediprn.org

Jim Beasley, MPA
RI MomsPRN Program Manager
Rhode Island Department of Health
Jim.Beasley@health.ri.gov

Sarah Hagin, Ph.D.
PediPRN Program Manager
Bradley Hospital
shagin@lifespan.org



2023 MCHB Programs All Awardee Annual Meeting Lightning Round

Vermont

Kathryn Wolfe, LICSW

Vision: Healthy Communities, Healthy People



A Model of Integrating Doula Care into Community Mental Health System

Kathryn Wolfe, LICSW

Program Administrator, Vermont Dept
of Mental Health

VT Screening, Treatment & Access for
Mothers & Perinatal Partners
(STAMPP)



Doulas as early intervention & preventative care

- STAMPP funding to Designated Agencies has helped build capacity of providers to treat PMADs with emphasis on training & increasing access to services
- Doula: defined as a non-clinical birth worker trained to provide physical, emotional, and educational support for client during pregnancy, labor & delivery, and into the postpartum period
- Supportive of early parent-child attachment
- Doulas are in the unique position to offer continuity of care across the perinatal period



Doula Project Inception—2014

Supports only offered to those who receive Medicaid assistance

Must live in Washington County catchment

Must qualify for community mental health supports

Must become client of agency

Getting prenatal care at local community hospital

Community Doula Program Growth—2023

(Only possible through grant funding)

Must live in
catchment area

Any insurance/no
income
requirements or
eligibility

No mental health
eligibility

Support at any
place of birth

Do not need to
become client of
agency

Offering Tiered Level of Supports

TIER 1: HIGHEST NEEDS & MOST AT-RISK

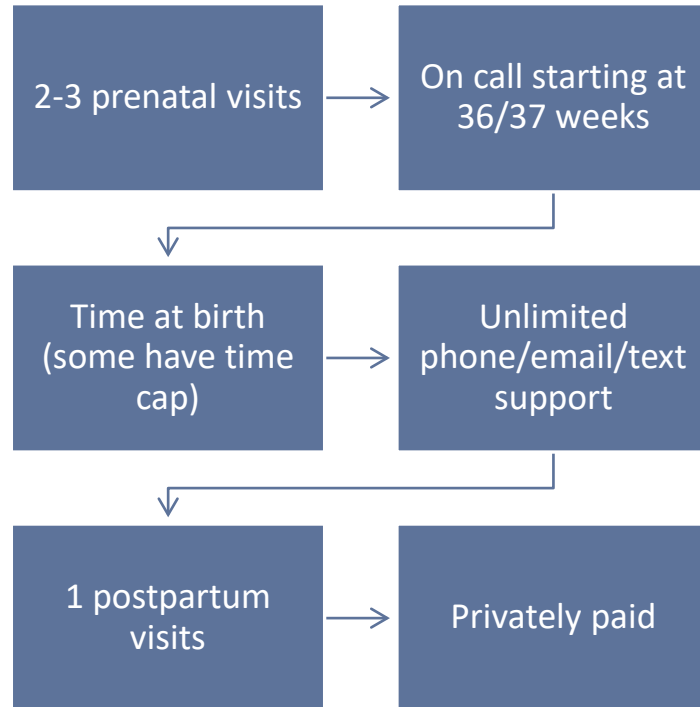
- Receive Medicaid assistance (below poverty line)
- Highest scoring of Social Determinates of Health Screenings
- Preexisting mental health challenges
- May identify as priority population
- Social risks: history of trauma, generational poverty, unstable housing, lack of natural supports, risk of poor attachment and bonding
- Become agency clients & offered case management and doula support up to one year postpartum

TIERS 2 & 3: MODERATE AND BASIC LEVEL OF SUPPORT

- Any insurance
- Middle or low SDOH scores
- Low grade or no preexisting mental health challenges
- Moderate support offered 10 additional hours with doula
- Room for fluctuation as needed

Services Provided

TRADITIONAL DOULA MODEL



COMMUNITY DOULA MODEL AT WCMHS

- 2-3 prenatal visits
- A doula is available at any point in pregnancy
- Time at birth (no time cap)
- Unlimited phone/email/text support
- At least 3 postpartum visits and up to unlimited depending on need & population
- Case management & community support as needed

Looking ahead...

Gaining positive attention across the state of VT, this doula model has inspired interest in other communities

Intentions to replicate doula programming across VT to support perinatal mental health & target health disparities

- Toolkit
- Mentorship to other designated agencies
- Legislature for Medicaid reimbursement

Thank you!

Kathryn Wolfe, LICSW
Program Administrator
Vermont Dept of Mental Health
VT Screening, Treatment & Access for Mothers & Perinatal Partners (STAMPP)

Kathryn.wolfe@vermont.gov

(802)760-9280

